



EKİN ENDÜSTRİYEL

**ANODE BAR
CATALOGUE**

Follow us on social media!



www.instagram.com/ekinendustriyel



www.facebook.com/ekinendustriyel



www.youtube.com/ekinendustriyel



www.linkedin.com/company/ekinendustriyel



www.twitter.com/ekinendustriyel



www.soundcloud.com/ekinendustriyel



www.spotify.com/ekinendustriyel



EKIN ENDÜSTRİYEL
Isıtma-Soğutma San. Tic. Ltd. Şti.





The first condition of innovation is to question.

And the first condition of sustainable innovation is to question constantly.

The journey of innovation has started with a question for us too: “How can we develop value-added technologies in Turkey?”. First turning point in this long journey was the birth of MIT (Made in Turkey) brand. MIT made us the first plate heat exchanger producer of Turkey and it’s founding vision was not to become a local alternative, it was to build a high-quality brand that can compete on a global level.

While we are working towards this goal in the past 15 years, our products and processes deemed worthy for documentation by many national and international quality assessment institutions such as ISO, TSE, CE, GOST and many more. This was the natural outcome of our constant questioning of the status-quo and our desire to outperform ourselves.

New Generation Engineering

With our engineering approach that focuses on the process, not the problem, we do not just specialize in a product, we consider the entire ecosystem of that product. Ergo, we produce all the other components of a system in addition to plate heat exchangers and we focus on the constant development of engineering staff required to provide an end-to-end application.

We provide a “solution” rather than a product with our business development, presales, sales and after sales services provided by our expert engineers.

In our 15th year, we continue to grow as a solution partner for projects that need high technology in more than 60 countries with our internationally approved high-quality plate heat exchangers; components such as accumulation tanks, boilers, industrial pumps and installation materials that completes these exchangers to form a system; and complementary services provided by our expert engineer staff.



HEAT TRANSFER PRODUCTS

- Gasketed Plate Heat Exchangers
- Brazed Heat Exchangers
- Shell & Tube Heat Exchangers
- Evaporators and Condensers
- DC Fan Driven Oil Coolers
- Heat Coils
- Serpentine / Radiators / Economizers

PRESSURE VESSELS

- Water Heater Tanks
- Water Storage Tanks
- Buffer Tanks
- Expansion Tanks
- Stainless Steel Tanks
- Balance Tanks / Dirt Separators / Air Separators / Air Tubes
- Steam Separators
- Pressured Air Tanks
- Neutralization Units

INDUSTRIAL AND FOOD GRADE SYSTEMS

- Heat Stations
- Industrial Process Systems
- Dosing Systems
- Substations
- Thermoregulators
- Pasteurizers
- CIP and Hygienic Process Systems
- Hygienic Storage and Process Tanks
- Homogenizers
- Turn-key Projects

FLUID TRANSFER PRODUCTS

- Lobe Pumps
- Hygienic Centrifugal Pumps
- Twin Screw Pumps
- Gear Pumps
- Magnetic Drive Pumps / Thermoplastic Pumps
- Dosing Pumps
- Air Operated Double Diaphragm Pumps (AODD)
- Drum Pumps
- Monopumps
- Centrifugal Blowers
- Roots Blowers
- Turbo Blowers

FLOW CONTROL UNITS

- Butterfly Valves
- Ball Valves
- Globe Valves
- Knife Gate Valves
- Actuators
- Check Valves and Strainers
- Thermoplastic Valves

ENERGY SYSTEMS

- Boilers
- Steam Generators
- Solar Collectors
- Chillers
- Cooling Towers

PRODUCT RANGE



Contents

Cathodic Protection (Cp)	1
1. Extruded Magnesium Anode Rod for Water Heater	1
2. Casting Magnesium Anode Rod for Water Heater	2



CATHODIC PROTECTION (CP)

Cathodic Protection (CP) is a technique to prevent the corrosion of a metal surface by making it to be protected the cathode of the system. Cathodic protection(CP) systems are most commonly used to protect structures such as steel, water, ship's hulls, buried pipelines and submersed structures such as storage tanks, steel pier piles, ships, offshore oil platforms and onshore oil well casings.

Cathodic Protection (CP) systems usually achieved by two methods, these are by applying to the sacrificial anodes or by use of an impressed current system.

Please view our catalogue which display most of the standard sacrificial anodes and impressed current system materials.

If you do not see the anode/material that you require, please contact us for availability.

Sacrificial Magnesium Anodes

Sacrificial Magnesium Anodes are widely used for cathodic protection in underground steel pipelines, tanks, boilers, condensers, water, heat-exchangers, ship hulls and marine structures applications, because it has the greatest driving potential of any other metals.

1. Extruded Magnesium Anode Rod for Water Heater

Extruded Magnesium Anodes are usually used in a small diameter anodes requirement, such as for water heaters, boilers, water storage tanks, heat plumbing, gas stations CP systems.



Chemical Composition of Extruded Anode for Water Heater %

Alloy	Al	Mn	Zn	Ca (Max)	Si (Max)	Cu (Max)	Ni (Max)	Fe (Max)	Other Imp.		Mg
									Each	Total	
AZ31B	2.5- 3.5	0.2 - 1.0	0.6-1.4	0.04	0.10	0.01	0.001	0.005	---	0.30	Bal.
Mg-Mn	0.01 Max	0.5 - 1.3	---	---	---	0.02	0.001	0.03	0.05	0.30	Bal.

Extruded Magnesium Anode Drawing



Extruded Magnesium Anode Specification and Dimension

Diameter (inch)	Core Eccentric (inch)	Core Diameter (inch)	Straightness (inch/ 2 ft length)	Weight (lbs/inch)
0.675	0.050	0.135	0.060	0.025
0.750	1/16	0.135	0.040	0.031
0.800	1/16	0.135	0.040	0.035
0.840	1/16	0.135	0.040	0.038
0.900	1/16	0.135	0.040	0.043
1.050	1/16	0.135	0.040	0.057
1.315	1/16	0.135	0.040	0.089

*We can also customize anodes according to client's requirements.

2. Casting Magnesium Anode Rod for Water Heater

The magnesium anode rod is designed to make a longer life for water heaters and boilers, it is the solution to smelly water and sediment control and other specific problems. Deyuan supplies the water heater magnesium anode rod following the standard of NF EN 12438.



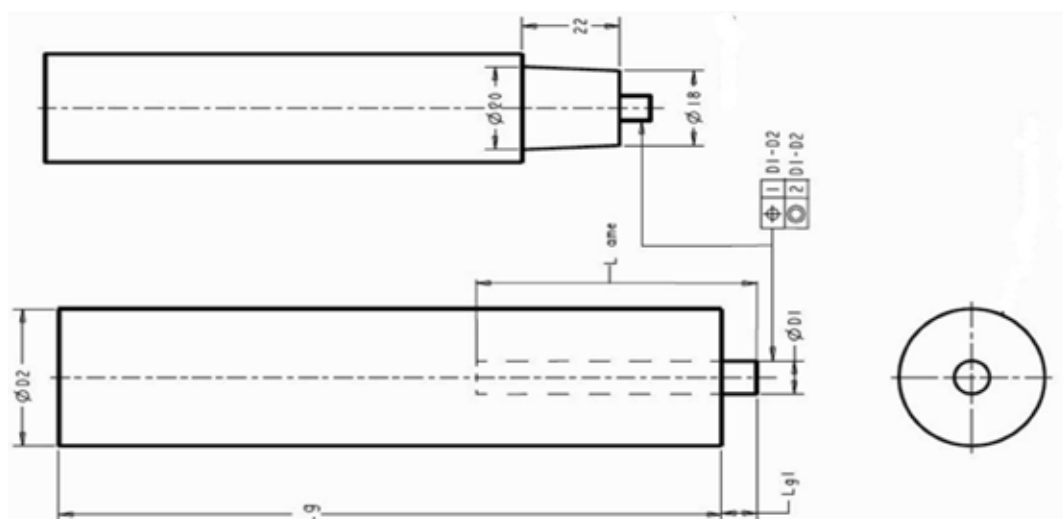
Chemical Composition of Casting Anode for Water Heater %

Alloy	Al	Zn	Mn	Si (max)	Cu (max)	Ni (max)	Fe (max)	Total of Impurities (max)	Mg
AZ63B	5.30-6.70	2.50-3.50	0.15-0.70	0.10	0.02	0.002	0.003	0.30	Bal.

Electrochemical PropertiesOf Casting Anode

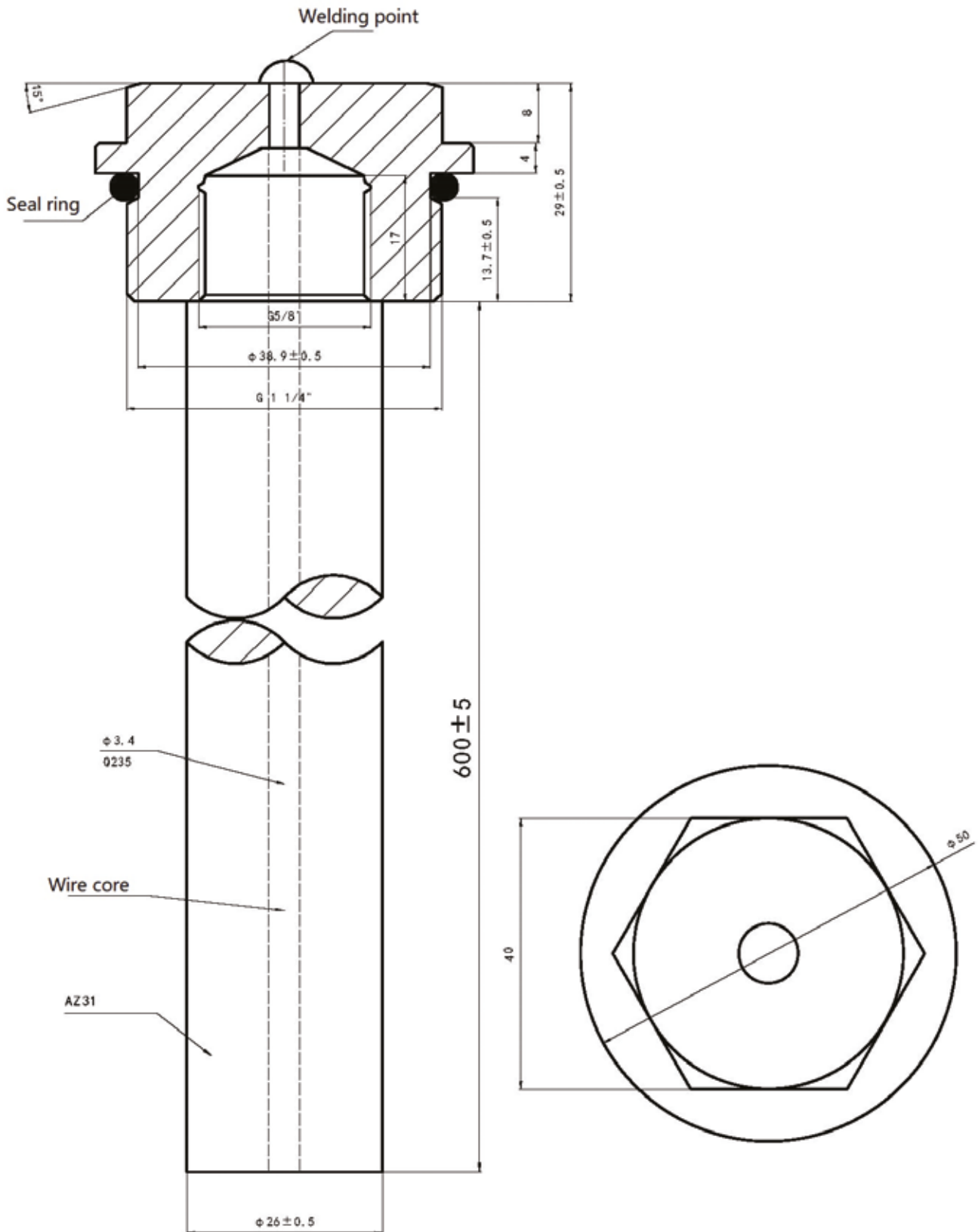
Open voltage (-V)	Closed voltage (-V)	Actual capacity (A.h/kg)	Efficiency (%)
1.50-1.60	1.45-1.55	1,100 Min	55 Min.

Casting Magnesium Anode Rod Drawing



Casting Magnesium Anode Specification and Dimension (All the dimensions in mm)

Type	ØD1	ØD2	Lg	Lg1	Lg dme
A-1	M8	26	120	10	90
A-2	M8	26	160	10	90
A-3	M8	26	186	10	90
A-4	M8	26	252	10	90
A-5	M8	26	322	10	90
B-1	M6	26	130	6.5	100
B-2	M6	26	250	6.5	100
B-3	M6	16	200	6.5	100
B-4	M6	16	250	6.5	100
B-5	M6	16	400	6.5	100
C-1	M8	33	500	10	90
C-2	M8	33	286	10	90



Note:

1. Thread cap is galvanized Q235.
2. Wire core: Q235.
3. Anode Alloy: AZ31 Mg alloy.



A chain is only as strong as its weakest link.

Running and maintaining a quality production process that meets international standards requires focusing on quality all along the ecosystem. Maintaining this focus requires a unifying vision of constant improvement shared by all stakeholder, and a certain level of expertise for all parties involved. Ekin Academy was established with the principles of continuous development and growing together to share the knowledge and experience that will realize this vision.

We support the development of our employees with training programs that directly contribute to the results in their business processes and make a difference in their personal development. We offer technical trainings on heat transfer, pressure vessels, package systems, food systems and liquid transfer. We help them become individuals who will make a difference with our development programs that covers topics like leadership, strategy, sales and many more. In addition, we provide information regarding installation, operating, maintenance and repairs with our pre and after sales training modules prepared for our business partners and customers.

At Ekin Academy we do not solely focus on the development of our staff, partners and customers. Thanks to our university collaborations, we provide the means for future engineers to put their theoretical knowledge to use with practical applications.



We organize seminars, conferences and trainings for professional chambers, and institutions we collaborate on social responsibility projects. Because we know that only by investing in the society, the industry and the future of the industry, we can become a country known for its high-quality engineering products.

SALES TEAM

An Engineering Approach from Sales to Maintenance

We offer value added pre and after sale services with our customer satisfaction-oriented approach and deep expertise we are more than happy to share. Thanks to our expert engineers that provide proactive solutions, we focus on making a difference throughout the process, from presales to maintenance.

With our “quality product, quality service, quality solution” approach, we are more than a manufacturer and supplier, we are a highly motivated solution partner for all kinds of heating and cooling projects.



Customer Satisfaction



Our priority is to ensure customer satisfaction and protect the rights of our customers with our pre-sales processes that analyze customer needs well, quality-registered product range, expert staff and meticulous working methods.

Ethical Values



We conduct all our activities in accordance with the laws and then with ethical values. We believe in growing together and we look for mutual benefit in all our business relationships.

Privacy Policy



All your personal information shared with our company is guaranteed by our ethical values and our processes in compliance with the Law No. 6698 on Protection of Personal Data.

Information Security



All our information technology operations are protected by our information security processes, which are managed in accordance with ISO 27001 Information Security Management System requirements.

CERTIFICATES





PROFESSIONAL SYSTEM SOLUTION CENTER

From our MIT professional system solution center, you can get help with problems with your pumps, heat exchangers and your system. Our solution center consisting of our expert engineers will be happy to help you.

- Domestic hot water installations.
- Central and district heating systems.
- Milk, yogurt, heating, cooling and pasteurization systems.
- Industrial cooling and heating systems.
- Oil cooling systems.
- Energy recovery systems.
- Pool heating systems.
- Steam installations.



It is vital for your system to be designed and implemented correctly in the first installation in order to be able to operate at the desired capacity, smoothness and long life. For this reason, you can get first-hand

the technical support you need during the installation phase of your system and the problems that may arise in the business; You can reach us **24 hours +90 (216) 232 24 12 in 7 days.**

We would like to reiterate that we will be happy to share our knowledge accumulated over many years with our valued customers in order for your system to work correctly and performance.

Ekin will continue to be the best solution partner for you in all applications with all kinds of heating and cooling applications.



+90 850 811 04 18

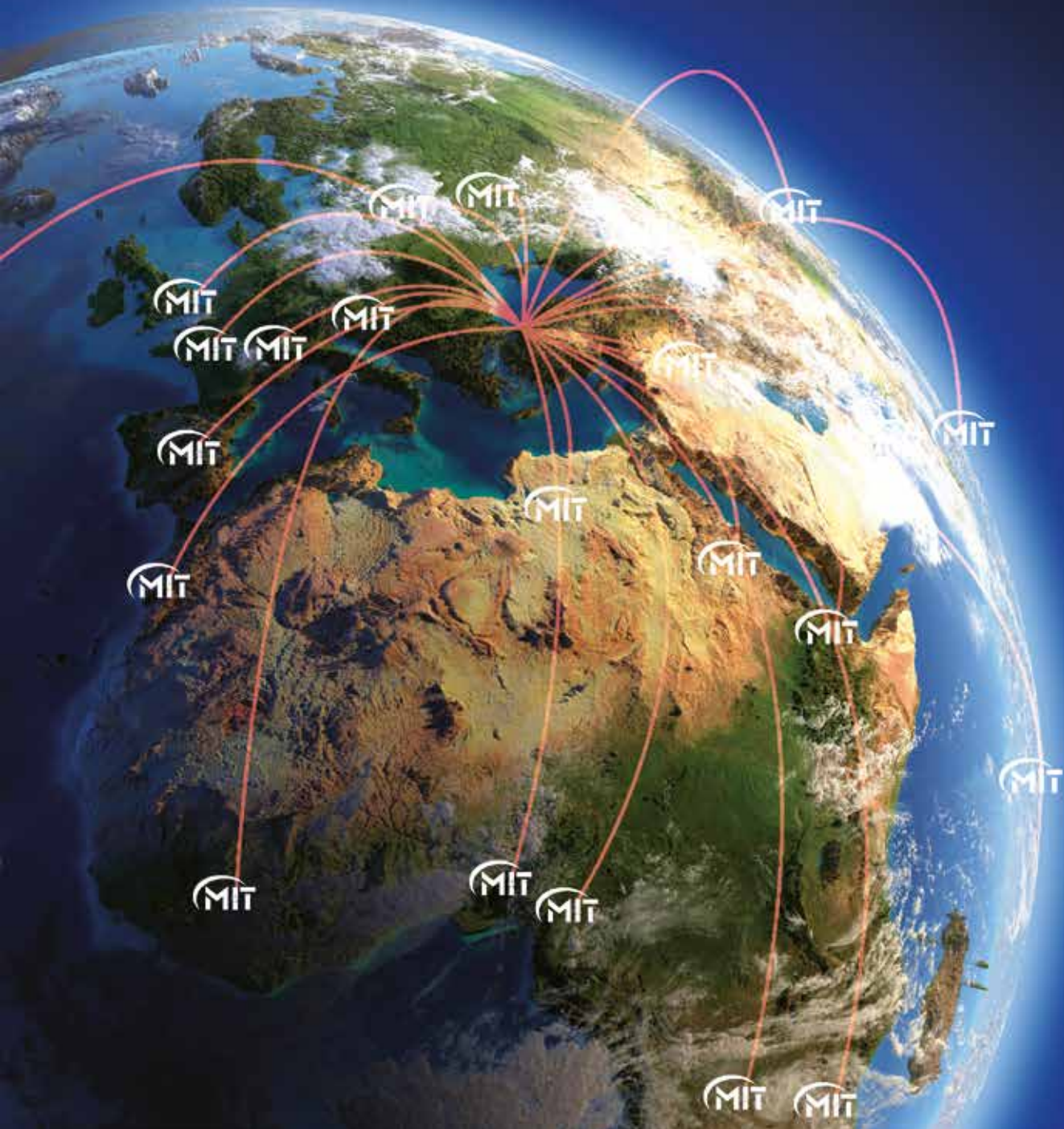


/ekinendustriyel

**Follow us on
social media...**



Today; **135 points** in the world.





EKİN ENDÜSTRİYEL

Isıtma-Soğutma San. Tic. Ltd. Şti.

Dudullu Organize Sanayi Bölgesi - Des Sanayi Sitesi
107. Sk. B14 Blok No: 2 Ümraniye / İstanbul / Turkey
Phone: +90 216 232 2412 **Fax:** +90 216 660 1308
info@ekinendustriyel.com - www.ekinendustriyel.com

444 EKİN
3546

